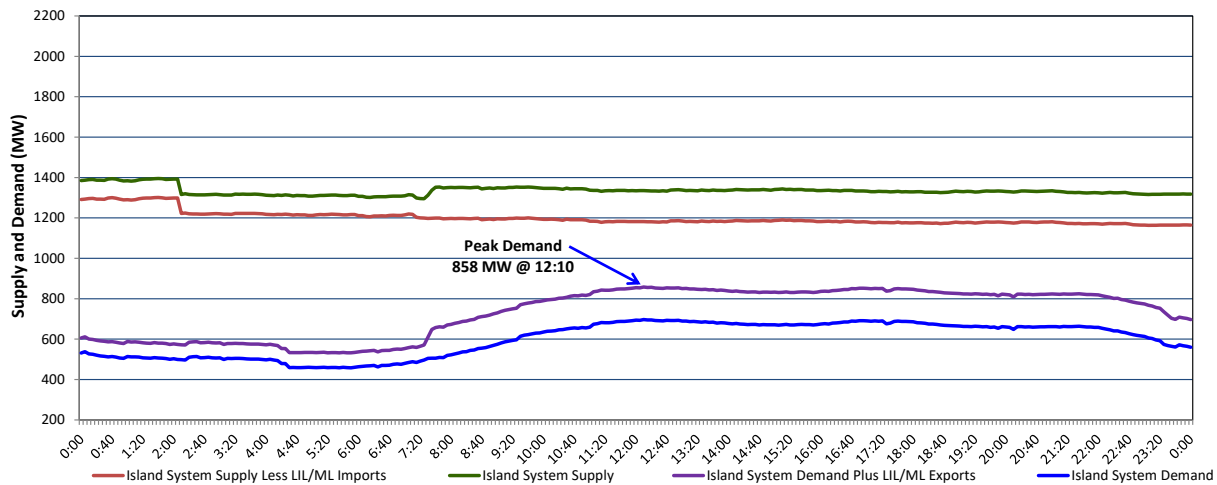


Newfoundland Labrador Hydro (NLH) Supply and Demand Status Report Filed Monday, July 04, 2022

Section 1 Island Interconnected System Supply, Demand & Exports Actual 24 Hour System Performance For Sunday, July 03, 2022



Supply Notes For July 03, 2022

1,2

- A As of 0857 hours, April 04, 2022, Holyrood Unit 3 unavailable due to planned outage (150 MW).
- B As of 1327 hours, May 08, 2022, Bay d'Espoir Unit 6 unavailable due to planned outage (76.5 MW).
- C As of 2351 hours, May 28, 2022, Holyrood Unit 2 available but not operating 150 MW (170 MW).
- D As of 0800 hours, June 08, 2022, Holyrood Unit 1 unavailable due to planned outage (170 MW).
- E As of 1214 hours, June 19, 2022, Bay d'Espoir Unit 7 unavailable due to planned outage (154.4 MW).
- F As of 1422 hours, June 19, 2022, Granite Canal Unit unavailable due to planned outage (40 MW).
- G **At 0210 hours, July 03, 2022, Bay d'Espoir Unit 5 unavailable (76.5 MW).**

Section 2 Island Interconnected Supply and Demand

| Mon, Jul 04, 2022 | Island System Outlook ³ | Seven-Day Forecast | Temperature (°C) | | Island System Daily Peak Demand (MW) | |
|--|------------------------------------|-------------------------|------------------|---------|--------------------------------------|-----------------------|
| | | | Morning | Evening | Forecast | Adjusted ⁷ |
| Available Island System Supply: ⁵ | 1,324 MW | Monday, July 4, 2022 | 16 | 16 | 885 | 885 |
| NLH Island Generation: ^{4,8} | 855 MW | Tuesday, July 5, 2022 | 14 | 16 | 745 | 745 |
| NLH Island Power Purchases: ⁶ | 95 MW | Wednesday, July 6, 2022 | 17 | 13 | 805 | 805 |
| Other Island Generation: | 220 MW | Thursday, July 7, 2022 | 16 | 16 | 760 | 760 |
| ML/LIL Imports: | 154 MW | Friday, July 8, 2022 | 12 | 11 | 765 | 765 |
| Current St. John's Temperature & Windchill: | 16 °C | Saturday, July 9, 2022 | 14 | 15 | 720 | 720 |
| 7-Day Island Peak Demand Forecast: | 885 MW | Sunday, July 10, 2022 | 13 | 15 | 725 | 725 |

Supply Notes For July 04, 2022

3

- Notes:
1. Generation outages for running and corrective maintenance are included. These are not unusual for power system operations. They generally do not impact customer supply. The power system operators schedule outages to system equipment whenever possible to coincide with periods when customer demands are low and sufficient supply reserves are available. However, from time to time equipment outages are necessary and reserves may be impacted.
 2. Due to the Island system having no synchronous connections to the larger North American grid, when there is a sudden loss of large generating units there may be a requirement for some customer's load to be interrupted for short periods to bring generation output equal to customer demand. This automatic action of power system protection, referred to as under frequency load shedding (UFLS), is necessary to ensure the integrity and reliability of system equipment. Under frequency events have typically occurred 5 to 8 times per year on the Island Interconnected System and the resultant customer load interruptions are generally less than 30 minutes. With the activation of the Maritime Link frequency controller during the winter of 2018, UFLS events have occurred less frequently.
 3. As of 0800 Hours.
 4. Gross output including station service at Holyrood (24.5 MW) and improved NLH hydraulic output due to water levels (35 MW).
 5. Gross output from all Island sources (including Note 4).
 6. NLH Island Power Purchases include: CBPP Co-Gen, Nalcor Exploits, Rattle Brook, Star Lake, Wind Generation and capacity assistance (when applicable).
 7. Adjusted for curtailable load, market activities and the impact of voltage reduction when applicable.
 8. Due to limitations inherent in the design of combustion turbines, the output of combustion turbines may be reduced in the event that ambient temperatures exceed the threshold

Section 3 Island Peak Demand Information Previous Day Actual Peak and Current Day Forecast Peak

| | | | |
|-------------------|--|-------|--------|
| Sun, Jul 03, 2022 | Actual Island Peak Demand ⁹ | 12:10 | 858 MW |
| Mon, Jul 04, 2022 | Forecast Island Peak Demand | | 885 MW |

Notes: 9. Island Demand / LIL / ML Exports (where applicable) is supplied by NLH generation and purchases, plus generation owned and operated by Newfoundland Power and Corner Brook Pulp & Paper (Deer Lake Power, DLP).